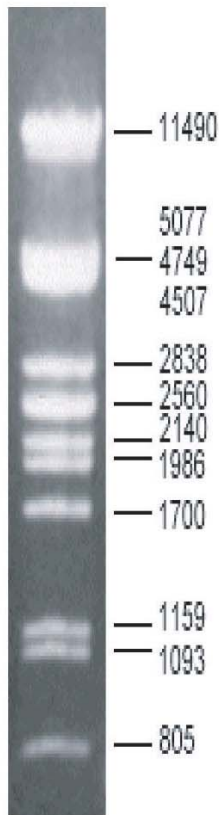


Microzone Ltd

Lambda *Pst*I Ladder

Catalogue Number: 1LLP-500

Volume: 5 x 1 ml for 500 loadings



The λ *Pst*I DNA Ladder is prepared by restriction digestion of Lambda DNA to completion with *Pst*I, followed by heat inactivation of the enzyme.

The resulting 28 fragments range from 15 base pairs to 11.49 kilobases in size. (15, 72, 87,94, 160, 164, 200, 211, 216, 264, 339, 448, 468, 514, 805, 1093, 1159, 1700, 1986, 2140, 2443, 2449, 2560, 2838, 4507 4749, 5077 and 11490 bp)

The λ *Pst*I DNA Ladder is supplied ready to use in loading buffer containing MZ Blue Dye.

Load 10 to 15 μ l onto the gel (340 to 500 ng)

Recommended concentration of agarose 0.7 to 1.7%.

